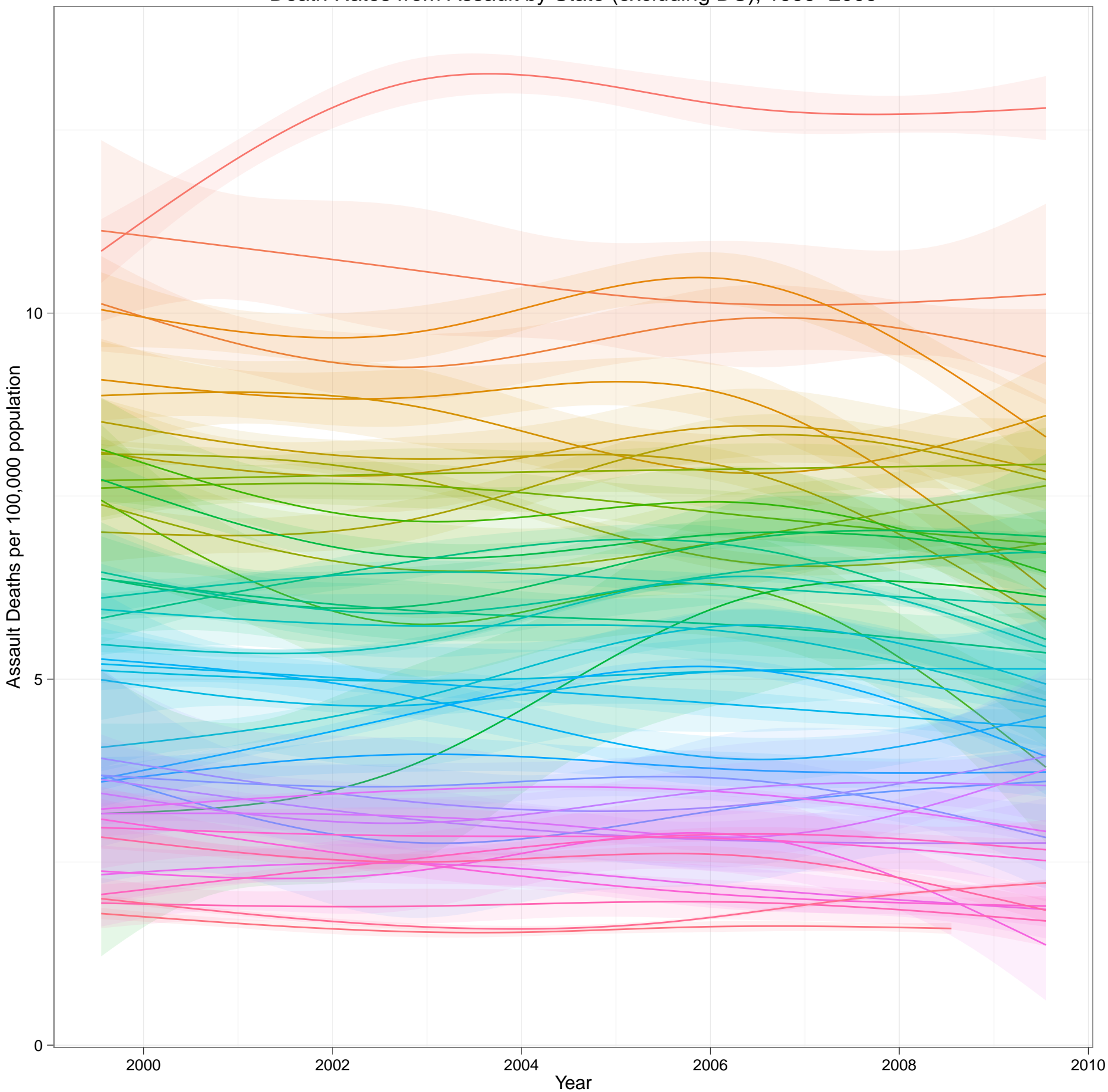


Death Rates from Assault by State (excluding DC), 1999–2009



- | | | | | |
|---|---|--|---|--|
| ■ Louisiana | ■ Missouri | ■ Oklahoma | ■ Colorado | ■ Hawaii |
| ■ Mississippi | ■ Tennessee | ■ Texas | ■ Nebraska | ■ Oregon |
| ■ Alabama | ■ Georgia | ■ Pennsylvania | ■ Wisconsin | ■ Massachusetts |
| ■ Maryland | ■ Alaska | ■ Virginia | ■ Montana | ■ Iowa |
| ■ Arizona | ■ North Carolina | ■ Ohio | ■ Rhode Island | ■ Minnesota |
| ■ New Mexico | ■ Delaware | ■ Kentucky | ■ Connecticut | ■ Maine |
| ■ South Carolina | ■ Michigan | ■ West Virginia | ■ South Dakota | ■ New Hampshire |
| ■ Nevada | ■ Florida | ■ New York | ■ Washington | |
| ■ Arkansas | ■ Indiana | ■ Kansas | ■ Utah | |
| ■ Illinois | ■ California | ■ New Jersey | ■ Idaho | |

Source: CDC WONDER. Age-adjusted.
 Estimates are unavailable for some states with very low assault rates.
 Kieran Healy. <http://kieranhealy.org>